

2003. 6

(syna@kiep.go.kr)

I.

- : **9,159,115 km²**
- : **2 7,500 (2000)**
- :
- : **GMT 5 , 6 8 .**

- : **(United States of America)**
- : **(Washington D.C.)**
- : **(50)**

- : **(4)**
- : **(George W. Bush)**
- : **(:100 , 6 . :435 , 2 , 2002 11)**
- : **(51 , 229), (48 , 205)**

- : **(86%), (12%), (1%), (1%)**
- :
- : **(56%), (28%), (2%)**
- : **(12)**

- : **1948 8 13**
- : **(1998), (1999)**
- : **(8 , 7 , 5 , 1)**

II.

1.

		2002	1/4	2/4	3/4	4/4	2003 1/4
		286.9	-				
GDP		10,446.2	10,313.1	10,376.9	10,506.2	10,588.8	10,704.2
1 GDP		36,392	-				
	%	2.4	5.0	1.3	4.0	1.4	1.9
	%	5.8	5.6	5.9	5.8	5.9	5.8
가	%	2.4	1.4	3.4	1.8	2.5	3.0
(GDP)	%	- 1.5	-				
		682.6	164.6	172.4	175.8	170.7	172.2
	〃	1,166.9	271.1	294.9	298.9	302.9	308.6
		- 484.4	- 107.8	- 122.5	- 123.3	- 132.3	- 136.4
	〃	- 503.4	- 112.5	- 127.6	- 127.0	- 136.8	-
		78.6	67.7	74.8	75.5	78.6	79.4
	/	0.9454	0.8766	0.9561	0.9806	0.9454	1.0797

- : 1) 가 .
 2) (10.1 9.30) .
 3) .
 : , (FRB), EIU

2.

		2003	2004	2005	2006	2007
GDP 가	%	3.1	3.7	3.3	3.3	2.9
가	%	2.3	2.4	2.6	2.4	2.4
		- 523.9	- 612.1	- 638	- 658.9	- 663.4

: DRI-WEFA, U.S. 2003. 1

3.

가.

(: , %)

	2000	2001	2002	2003. 1 3	
					(%)
< >	357.0	321.7	290.6	70.2	40.8
	171.9	160.1	156.9	42.3	24.6
	90.6	88.3	84.4	21.6	12.5
	80.2	75.4	78.4	19.7	11.4
	47.5	49.4	49.5	13.1	7.6
< >	346.7	298.0	283.9	71.0	23.0
	281.4	284.3	307.7	81.4	26.4
	299.8	273.9	269.1	79.2	25.7
	195.8	189.8	203.9	50.9	16.5
	46.0	46.6	49.7	13.6	4.4

: , Bureau of Economic Analysis, U.S. INTERNATIONAL TRADE IN GOODS AND SERVICES, 2003. 5

(: , %)

	2000	2001	2002	2003. 1 3	
< >	178.8	163.7	160.8	41.2	23.7
	111.7	101.5	97.5	22.7	13.1
	65.3	57.6	51.4	12.5	7.2
	16.3	19.2	22.1	6.5	3.7
	41.6	40.8	33.3	8.7	5.0
< >	229.2	217.0	210.6	55.7	18.7
	43.5	41.4	40.9	10.2	3.4
	146.6	126.6	121.5	28.9	9.7
	135.9	131.4	134.7	33.5	11.3
	100.0	102.3	125.2	31.1	10.5

: , Bureau of Economic Analysis, U.S. INTERNATIONAL TRADE IN GOODS AND SERVICES, 2003. 5

(:)

	1999	2000	2001	2002
< >	174.6	165.0	114.0	109.0
()	34.9	58.0	36.4	25.6
,	86.4	54.1	35.0	47.1
	9.4	10.6	12.7	9.6
	6.4	12.4	9.3	11.9
	14.5	10.8	7.5	9.4
(가)	47.8	35.8	13.2	18.6
	18.1	19.0	14.4	17.3
	8.4	10.0	6.6	7.7
	8.3	3.0	16.1	18.4
	5.9	5.3	15.1	3.6
< >	283.4	301.0	124.4	23.6
()	69.6	58.0	29.2	6.2
	4.8	10.6	10.3	5.6
	19.3	11.9	8.4	- 1.5
	16.2	17.5	1.9	8.5
	18.0	23.6	6.4	- 8.8
(가)	116.6	75.7	14.2	9.4
	41.7	39.6	15.2	- 3.5
	6.9	25.2	- 13.8	10.9
	29.8	49.4	14.7	7.1
	23.5	14.3	28.0	- 2.6
	26.4	26.0	4.6	- 5.5

: , Bureau of Economic Analysis, International Investment Data, 2003. 3.

4. .

가.

□

○

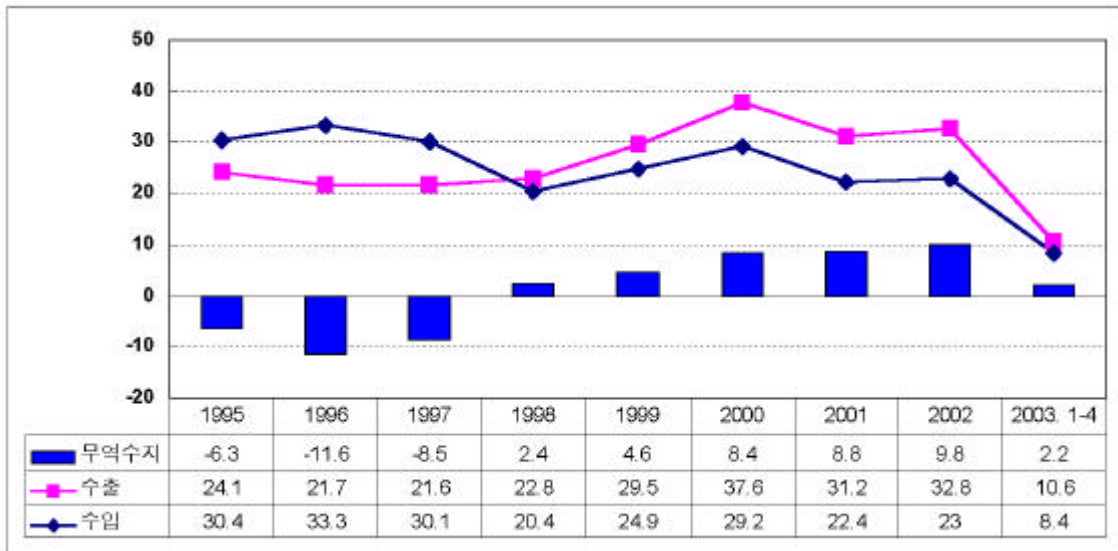
2 (2002)

○

7 , 6 (2002)

□

(:)



: (2003)

□

(:)

	2002	2003. 1 4		2002	2003. 1 4
	6,993.3	2,621.5		4,758.8	1,729.4
	3,727.0	997.5		1,181.2	209.7
	3,810.4	1,437.3		1,030.7	244.1
	2,861.4	642.7		762.1	574.9
	1,942.5	423.8		756.0	291.1

: MTI 3

: , KOTIS

.

□

○

.(2002)

□

對 / 對韓

< () >

	1998	1999	2000	2001	2002	2003. 1 3	
()	915.7	1,374.5	1,288.7	1,412.1	492.6	217.8	11,278.2

: , 『 』 , 2002. 09.

< 對韓 () >

	1997	1998	1999	2000	2001	2002. 1 5	
()	391.9	1,486.1	2,002.3	1,762.1	839.4	213.5	10,163.0

: , 『 』 , 2002. 6.

□ 對美 (: 2003 3)
 (:)

	5,325.1
	3,663.0
	1,088.5
	410.5
	308.0
	185.0
	171.8
	61.4
	51.3
	13.4
	11,278.2

:

IV.

1.

가. 2003 1/4 GDP 가

□ (5.29) 1/4 GDP 가 1.6%
1.9%() .

-

가 1.4% 2.0% .

- , () ,
(6.3%) 4.8%

.

< 가 >
(: %,)

	2002	2002. 1/4	2/4	3/4	4/4	2003. 1/4
G D P	2.4	5.0	1.3	4.0	1.4	1.9
	3.1	3.1	1.8	4.2	1.7	2.0
	-5.7	-5.8	-2.4	-0.8	2.3	-4.8
	-1.6	3.5	14.3	4.6	-5.8	-1.4
	3.7	8.5	22.2	3.3	7.4	-7.1
	4.4	5.6	1.4	2.9	4.6	0.3
GDP	1.1	1.3	1.2	1.0	1.8	2.5

:

.

:

(BEA), *Gross Domestic Product: FIRST QUARTER*
2003 (PRELIMINARY), MAY 29, 2003

·

□ 가 , 가 4/4
 가 ,
 1/4 1% GDP
 가 .

- 2002 가 가 ,
 2003
 4 0.1% .

- 2002 2002
 가가
 2003 3 4 .

- 2003 5 6.1%
 .
 가
 가 .

□ 가 .
 .
 - 가 5
 81.0 83.8 11

가 .
 - 5 ISM 가 4 PMI
 2 가

·

2.

□

(FRB,) .

가.

□

2 7,260
5 28 3,500

- (38.6%→15%), 가 .

□

가

-

2002

가 .

-

가 가

가

□

2000

가

9.11

2001

11

-

2002

가

2002

11

□ 2003 3 18 (FOMC)

(federal funds rate)

- 1961 1.25%

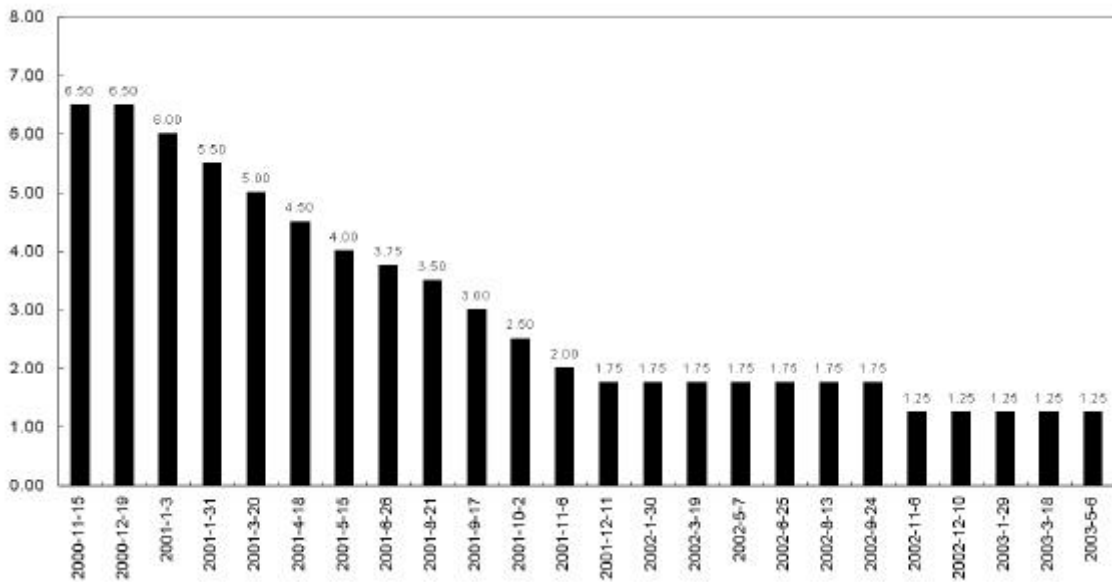
□ 3 FOMC 가

- 가

- FOMC : 6.24/25, 8.12, 9.16, 10.28, 12.9

< >

(: %)



3.

□

2002

1980

- 1990 , 2002
5,000 GDP 5% ,

- 가 가 .

- □ 4 가 가가
가 .

- 가 가 가
가

- □ 가 ,

- 가

- □ 가 가 ,

- 가
(FRB) , 3,500 가

- 가 가 2003
2.0~2.5%

4. .

가.

□ .

- 1990 , 가 , 2000 가
가

- - 2002 558 1
(20.2%) 2 (15.1%).

- 對美 가 가 對美
가 , 1997 1998

□ 2002 2001 가 5.0% 가 .

- 2.8% 가 2002 98

□ 2003 1 4 IT ,
가
2.9% 가 105 6 .

- 가 17.1% 가 84 .

□ , , , ,

□ (2002 12)

- : 23 18

- 가 : 3 3

○ (Certain Steel Rod): 99.1 가 , 00.2 (TRQ)

○ (Circular Welded Carbon Quality Line Pipe): 99.6 가
, 00.2 ()

○ (Steel, 16): 01.6 가 , 02.3

< - >

▲	<ul style="list-style-type: none"> · 1998 10 MOU · , · () ,
▲	<ul style="list-style-type: none"> · 가 · ,
▲	<ul style="list-style-type: none"> · 1998 , ()
▲	<ul style="list-style-type: none"> · 2000 ()가
▲	<ul style="list-style-type: none"> · 가 · , · Special 301 (PWL: Priority Watch List) (WL)
▲ ()	<ul style="list-style-type: none"> · 18

·

□

가 . -

FTA 가 .

- TPA

가

가

.

-

,

가

.

-

,

,

.