

2003. 6

(s y n a @ k i e p . g o . k r)

I.

- : 9,215,430 km²
- : 3,070 (2000 7)
- :
- : GMT 3.5 8 .

- : (Canada)
- : (Ottawa)
- : 10 州(Province) 2 (Territory)

- :
- 가 :
- : (Jean Chretien)
- : (301 , :112 , 2001)
- : (155), (60)

- .
- : (28%), (23%), (3%), (3%),
- : (61%), (24%), (3%), (12%)
- : (45.7%), (36.2%)
- : (12)

- :
- : 1963 1 14
- : (1966), (1999)
- : (3 , 3 , 1)

II.

1.

		2002	2002. 1/4	2/4	3/4	4/4	2003. 1/4
		31.4	-				-
GDP	¹⁾	1,154.9	1,122.2	1,150.9	1,164.6	1,182.0	1,211.1
1 GDP		23,538	-				-
GDP 가	%	3.3	5.8	3.8	2.7	1.6	2.4
	%	7.7	7.8	7.5	7.7	7.5	7.3
가	%	2.2	1.5	1.3	2.3	3.9	4.3
(GDP)	%	-					
	¹⁾	414.3	101.2	102.8	105.7	104.6	105.2
	" ¹⁾	356.5	85.8	88.6	91.1	91.0	89.7
	¹⁾	57.8	15.4	14.3	14.5	13.6	15.5
	" ¹⁾	23.4	6.8	6.4	5.3	4.9	8.0
		37.2	34.0	37.2	36.6	37.2	35.9
	C\$/	1.5704	1.5877	1.5318	1.5761	1.5591	1.4761

: 1) (C\$)

2)

: 1)

2)

2.

		2003	2004	2005	2006	2007
GDP 가	%	2.3	3.4	3.2	3.3	3.0
가	%	2.9	1.3	1.6	1.5	2.3
		20	21	24	26	30

: Global Insight, Canada, 2003. 6

3.

가.

(: , %)

	2000	2001	2002	2003. 1 3	
< >	107.8	99.7	94.7	23.6	22.3
	98.1	92.9	97.1	22.7	21.5
,	67.2	66.8	69.4	16.9	16.0
(, 가)	53.2	54.7	50.4	18.7	17.7
(,)	42.2	39.3	36.7	8.6	8.1
< >	122.7	112.4	105.8	25.7	28.6
	77.4	72.5	81.4	20.5	22.8
,	70.5	68.5	68.8	17.4	19.3
	40.1	42.9	46.4	11.9	13.2
	18.6	20.4	21.7	5.6	6.2

: (Statistics Canada)

.

(: , %)

	2000	2001	2002	2003. 1 3	
< >	359.6	351.1	348.4	88.7	83.9
EU	22.1	22.0	21.2	6.0	5.7
	10.3	9.4	9.7	2.7	2.5
OECD	10.2	10.3	11.0	2.7	2.5
< >	267.7	255.1	254.7	63.3	70.3
EU	33.4	35.0	36.1	9.6	10.7
OECD	18.9	18.6	19.5	5.1	5.7
	11.7	10.6	11.7	2.9	3.2

: , Canadian international merchandise trade. 2003. 5

(: , %)

	2000	2001	2002
< >	70.5	54.9	43.9
EU	39.0	54.9	15.5
	15.9	33.7	13.3
	3.7	6.4	1.6
	12.0	1.4	13.5
< >	99.0	42.5	33.6
EU	16.5	38.7	25.1
	76.9	1.1	4.7
	0.3	0.8	1.1
	5.3	1.9	2.7

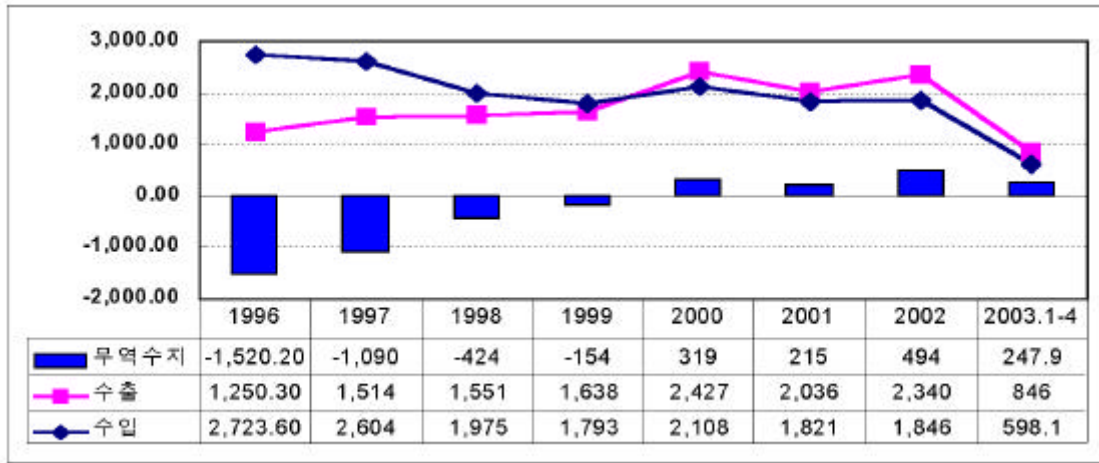
: (DFAIT), Trade and Economic Analysis Division,
2003. 5

4.

가.

15 .(2002)
8 .(2002)

(:)



: , KOTIS

(:)

	2002	2003. 1 4		2002	2003. 1 4
	810.6	317.6		344.9	120.3
	138.3	25.3		208.1	57.2
	190.4	40.7		112.7	22.3
	103.8	37.9		102.3	46.4
	72.7	29.3		83.5	41.3

: MTI 3

: , KOTIS

對 / 對韓

< 韓國 對 直接投資推移 () >

	1998	1999	2000	2001	2002	2003. 1 3	
()	45.8	18.6	36.5	24.9	5.0	5.5	671.2
:	, 『 』 , 2002. 09.						

< 對韓 直接投資推移 () >

	1998	1999	2000	2001	2002. 1 5	
()	61.6	342.8	288.2	26.7	9.9	869.3
:	, 『 』 , 2002. 6					

對 (, 2003 3) (:)

	393.3
	137.7
	104.4
	19.2
	7.9
	5.4
	1.5
	1.2
	0.5
	671.2

:

IV.

1.

가.

가, , 가, , .

- 2000 2001 가

- 1996 2000 4/4 22

○ 4.25% GDP 가 , 가 , 가, .

, 2000 4/4 가

2001 3/4 10 가 19%

- GDP 45% 4 , 9.11 가

- 2003 3 4 0.25%
가

- 가 1 0.8% 가 3.9% 4.5%

가 ,

- 6 3 3.25%

3.

가 가 45%

- , , , .

- 86% 가

對 2001 3,209
2001 3,894

- 1993 54% 가 .

- 51% . ,
67% .
가 對美 가 86%

- 1996 , ,
(FTAA)

- , 가 (Team
Canada) .

- WTO, OECD

- , EU,

4.

가.

, 가

- 3 0.64 5 0.74

가 84%

3 SARS

- SARS 2 GDP 0.5 0.8%

5 (BSE)

- 가

2%

5. .

가.

1990 가 , 2002 10
, 8 42

- 1993 - ,
.

- 1998
가 .

- 1991 , 2000
가 .

- 2002 23 , 18
5 .

- -
.

○ , 1
,
, , ,
.

1990 가 ,
가 .

- 對 ,
2,490
1.7%(2002 7) .

- 對 , 가 가
1998 가 2000
2 8,800 ,
2.0%(2002 7) .

.

-

가

.

(Bottled Water)

-

.

-

48

가

.

-

, 가

1995 7

.

<

>

가 .

. -

- 1993 “ ”

, .

- , ,

가 .

○ 가가

.

- 가 3 , GDP 36%, 19%
NAFTA

.

-

.