

2003. 6

(jokim @kiep.go.kr)

-
- : 736,903 km² (2,006,626 km²)
- : 1,545 (2002)
- :
- : GMT 4 (13)

-
- : (Republic of Chile)
- : (600)
- : 12 (region) , 51 州

-
- : (6)
- : (Ricardo Lagos, 2000 3 11)
- : (2001 12), (8 38 , 9 , 2), (120 , 4)
- : (Concertación, 69/ 20,) (PDC), (PRSD), (PS), (PPD) ; (Alianza por Chile, 51/ 17) 가 (RN), (UDI)

-
- : (75%), (20%), (5%)
- :
- : ,
- : (5 21), (9 11), (9 18)
- :

-
- : 1962 6 12
- : (1977), (1979), (1982), (1996), FTA (2003.2.15)
- :

1.

		1997	1998	1999	2000	2001	2002	2003	
	¹⁾	82.8	79.4	73.0	74.9	68.3	66.4	66.2	
1	GDP ¹⁾	5,663	5,355	4,861	4,922	4,432	4,234	4,188	
	GDP	%	6.6	3.2	- 1.0	4.4	2.8	2.0	3.6 ³⁾
	(PDBC,) ²⁾	%	10.63	13.49	11.09	9.38	6.51	2.88	2.59 ⁴⁾
	가 ()	%	4.0	- 1.1	- 1.3	4.2	0.8	2.5	0.6 ⁵⁾
	가 ()	%	6.0	4.7	2.3	4.5	2.6	2.8	3.5 ⁴⁾
	(INE,)	%	5.3	7.2	8.9	8.3	7.9	7.8	8.5 ⁵⁾
	()		6.5	11.4	12.4	13.4	13.1	11.9	12.8 ⁶⁾
	(FOB)		17.9	16.3	17.2	19.2	18.5	18.3	7.0 ⁵⁾
	(FOB)	〃	19.3	18.4	14.7	17.1	16.4	15.8	5.8 ⁵⁾
		〃	- 3.67	- 4.01	- 0.30	- 1.07	- 1.24	- 0.55	0.29 ³⁾
	()		17.8	16.0	14.7	14.7	14.2	15.3	15.9 ⁴⁾
	(CRM,)	/	464.33	469.58	489.82	507.07	522.35	538.02	545.97 ⁷⁾

: 1) Global Insight , 2) 90 , 3) 1 , 4) 5 , 5) 4 , 6) 3 , 7) 6 .

: Banco de Chile ; Global Insight. April 2003. *Latin America and Caribbean: Quarterly Review and Outlook, Second Quarter* ; Global Insight. April 2003. *Chile-Summary of Detailed Forecast, Annual Numbers* .

2.

	2003	2004	2005	2006	2007
GDP (%)	2.9	5.0	5.3	5.4	5.6
가 (%)	2.7	3.0	3.0	2.9	3.0
(%)	8.1	7.6	7.2	6.6	6.3
()	- 0.3	- 0.5	- 0.8	- 0.9	- 1.0

: Global Insight. April 2003. *Latin America and Caribbean: Quarterly Review and Outlook, Second Quarter* .

3.

가. (2001 2003)

(:)

	(FOB)			(CIF)		
	2001	2002	2003.3	2001	2002	2003. 3
1	6,745.9	6,269.8	1,743.4	6,571.6	6,435.5	1,576.1
2	3,341.2	3,561.0	906.8	3,387.9	3,204.2	859.9
3	1,115.5	1,326.1	591.5	1,726.8	1,615.1	564.4
4	1,557.1	1,488.1	491.9	가 1,043.7	995.5	301.5
5	가 1,014.1	1,154.7	293.3	· 920.0	948.2	264.3
6	1,125.8	1,120.9	269.7	479.2	421.9	112.0

: Banco Central de Chile, *Boletín Mensual*, No. 902, Abril 2003 ; *Indicadores de Comercio Exterior*, Marzo 2003.

. (2001 2003)

(:)

	(FOB)			(CIF)				
	가	2001	2002	2003.3	가	2001	2002	2003
1		3,421	3,735	1,044		3,064	3,064	941
2		2,136	1,951	616		2,871	2,560	627
3		1,070	1,270	421		1,498	1,618	472
4		825	908	207		1,053	1,172	335
5		1,228	805	174		689	723	166
6		830	678	193		552	543	134
7		800	865	233		533	475	98

: Banco Central de Chile, *Boletín Mensual*, No. 902, Abril 2003 ; *Indicadores de Comercio Exterior*, Marzo 2003.

□

(:)

1975- 1995	2,872	196	83	2,676
1996	1,248	105	13	1,143
1997	2,570	339	93	2,231
1998	11,481	6,412	80	5,081
1999	22,327	13,594	186	8,733
2000	23,040	18,329	352	4,711
2001	29,625	24,990	465	4,635
2002	26,819	23,196	224	3,623
2003.3	4,246	3,168	88	1,078
	124,240	90,329	1,543	33,911

: Banco Central de Chile, *Boletín Mensual*, No. 902, Abril 2003.

□

(2003 3)

(:)

				가						1)
	141	213	301	278	96	346	144	14,236	114	15,869
	161	7	707	639	15	438	346	1,355	22	3,690
	16	0	24	30	95	56	60	3,611	8	3,900
	198	1	82	39	0	87	364	862	0	1,633
	0	0	0	0	0	0	0	1,061	0	1,061
	4	86	13	0	0	- 6	18	796	0	911
	2	14	87	43	4	134	7	471	16	778
	2	3	266	51	6	150	18	247	3	746
	626	424	1,774	1,2528	302	1,620	1,158	26,517	238	33,911

: 1)

: Banco Central de Chile, *Boletín Mensual*, No. 902, Abril 2003.

□

()

(:)

	DL 600 ¹⁾	CNCI 14 ²⁾	CNCI 19 ²⁾	
1974 1984	2,316	284	-	2,600
1985	167	6	32	205
1986	262	7	214	483
1987	541	14	707	1,262
1988	845	18	886	1,749
1989	979	16	1,321	2,316
1990	1,315	36	418	1,769
1991	982	98	22	1,102
1992	999	158	-	1,157
1993	1,734	204	-	1,938
1994	2,521	410	-	2,931
1995	3,040	410	-	3,450
1996	4,822	442	-	5,264
1997	5,230	921	-	6,151
1998	5,973	539	-	6,512
1999	9,086	689	-	9,775
2000	2,977	736	-	3,713
2001 ³⁾	4,848	775	-	5,623
2002 ³⁾	3,322	446	-	3,768
	51,959	6,209	3,600	61,768

: 1) 下 , 2) 下 , 3) .

: ; [online].

□ 가 . (DL 600), 1974 2002 ()
(:)

			가							
	2,211	29,501	242,415	60	0	205,448	868	111,847	36,367	628,717
	0	18	58,985	0	0	57,373	1,814,975	39,002	5,126	1,975,479
	1,898	0	0	0	21,693	2,794	0	181	0	26,566
	100	0	0	0	475	1,869	838	197,029	3,000	203,311
	1,102	294	423,566	0	0	23,409	0	27,737	3,339	479,447
	1,645	0	0	1,528	0	116,641	7,567	327,775	18,000	473,156
	0	54,167	3,549	0	0	158,368	1,148	73,697	3,901	294,830
	8,737	2,732	582,432	20,899	103	1,356,064	4,977,215	443,346	42,410	7,433,938
	6,133	1,277	40,003	30	300	21,389	2,839	426,673	152,375	651,019
	580	0	0	295	38,373	372	0	44,398	0	84,018
	0	0	0	0	0	3,860	0	32,422	0	36,282
	0	0	0	0	0	8,756	0	645	4,803	14,204
	0	0	0	62,675	0	2,875	14,901	2,383	0	82,834
	6,623	115,458	554,831	0	0	187,093	0	357,843	15,528	1,237,376
	25,227	27,959	0	2,400	6,340	111,295	5,925	261,058	16,578	456,782
	100	13,451	1,694	5,842	0	65,805	108,344	37,535	19,583	252,354
	0	0	0	0	0	8,522	0	9,200	0	17,722
	7,961	40,374	0	0	0	65,742	7	14,315	1,371,134	1,499,533
	4,474	1,000	0	7,858	27,683	231,236	1,193,890	137,624	4,946	1,608,711
	0	0	0	413	0	22,502	0	504	1,000	24,419
	4,250	104	0	890	3,260	55,888	4,100	63,051	0	131,543
	33,545	227	0	0	0	7,025	20	101,997	0	142,814
	0	18,400	0	0	0	0	0	4,523	0	22,923
	0	3,084	0	0	0	97,815	0	38,976	2,737	142,612
	7,359	349	0	1,365	0	432,254	16,026	910,199	3,381	1,370,933
()	1,617	0	0	0	2,122	615	1,584	22,124	2,300	30,362
	22,222	0	0	1,263	23,911	107,288	3,257	847	0	158,788
	0	0	0	130,190	0	118,347	34,074	2,193	846	285,650
	12,449	38,354	0	165	6,369	72,343	1,754	67,967	3,341	202,742
	0	0	0	0	0	0	46,509	0	0	46,509
	70	1,489	0	500	0	3,861	155	16,539	850	23,464
	0	841	0	4,443	312	43,153	1,303,933	42,595	138	1,395,415
	1,298	723,695	4,747,425	997	130	168,304	2,194	2,843,546	1,120,033	9,607,622
	0	98,773	0	408	6,000	43,215	0	16,024	1,322	165,742
	8,232	27,858	14,405	0	21,708	255,525	0	167,497	5,058	500,283
	16,769	2,973	297,919	7,044	675	438,545	2,812,238	354,710	219,110	4,149,983
	78,821	36,345	2,237,553	16,232	85,082	2,171,806	5,715,167	3,984,345	1,526,237	15,851,588
	6,005	28,259	1,960	100	0	14,840	510	70,014	1,524	123,212
	35	2,272	0	0	0	4,972	0	51,094	0	58,373
	260.855	1,270,242	9,206,737	270,843	244,536	6,703,348	18,076,212	11,334,012	4,593,037	51,959,822

: 가 .

: Foreign Investment Committee, provisional figures as of December 31, 2002.

4. .

가.

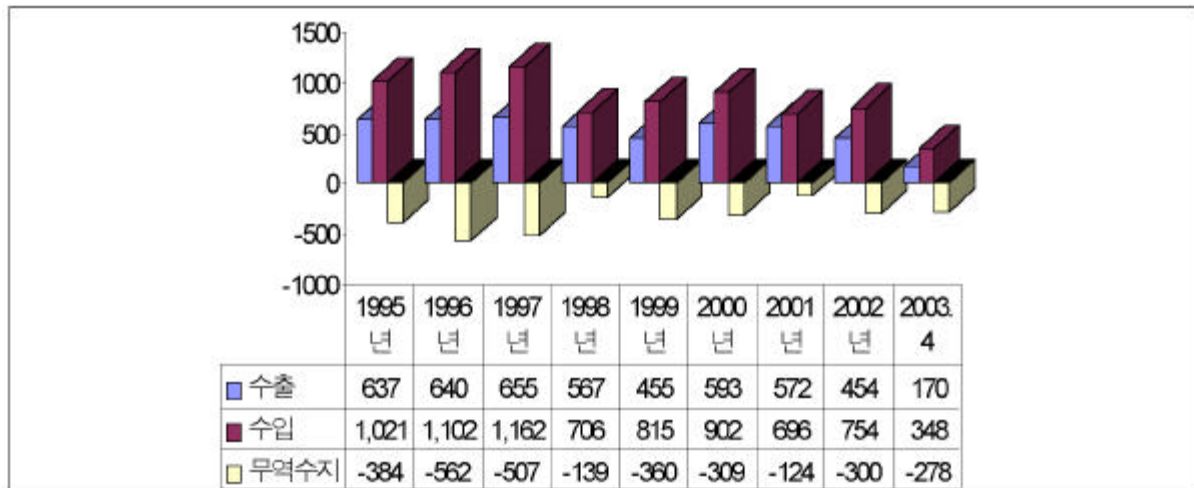
□ (2002)

- 42 , 29

- 7 , 9

□ 對 (1995 2003 4)

(:)



: , KOTIS.

□ 對 (2001 2003)

(:)

	2001	2002	2003.4		2001	2002	2003.4
.	1879	165	55(10.4)	.	338	430	164(16.3)
.	168	105	27(- 41.4)	.	198	178	118(70.2)
.	51	38	11(- 23.2)	.	105	74	34(56.1)
.	51	44	22(58.0)	.	54	70	31(25.5)
.	34	30	8(- 28.8)	.	0.2	0.3	- (- 37.3)
.	20	20	7(5.6)	.	-	-	- (- 63.0)

: (%)

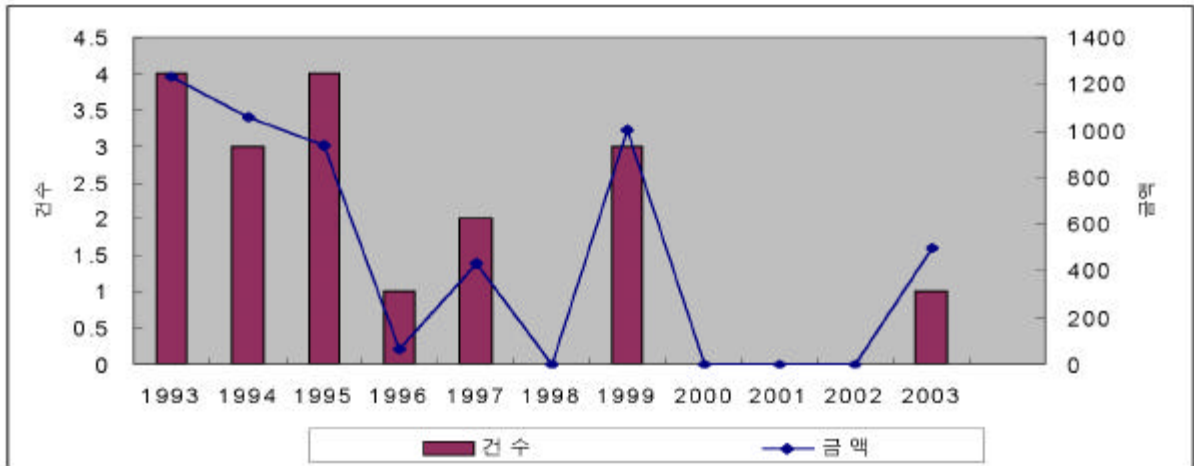
: , KOTIS(MTI 1)

□

- 61 (2003 3 ,)
 - 36
 (2002 12 , DL600)

□ 對 (2003 3)

(:)



AU : , .

□ 對

(:)

		對 ¹⁾
	1	31,204
	4	2,950
	11	9,232
	0	0
	0	0
	6	13,275
	1	100
	23	56,761

: 1) 2003 3 .
 : , .

•

1.

가.

□ 2003 1 3.6%

- 가가 2003 1 3.6%

•

○ 3.4%, 銅 가 同 5.7% 가 .

- 가 , 6%,
3.2%, 5.8%, 5.3%, 7.3%, 2.5%

- 가 , IMACEC 1
2.6%, 2 4.6%, 3 3.6%

○ IMACEC 4 3 4%
同 .

□

- 가 , 2002 7
가 3 3.9%, 4 1.9% 가

- 가 , 4
8.8% 8.5% 12.3%
가 .

○ 15% 가 가
1996 ,

가 2 10.1%, 3 7.5%,
4 13.2% , 1 4 10.1% 가 .

□

-

○ 2001 9 가 2001 4 2002 1
가 , 2002

○ 2001 1 8.2%, 2 4.7%, 3 5.2%

가 4 -6.6%, 2002 1 -1.4%

○ 2002 4 2.5%, 2002
14% 가 , 2003 1 0.6% 가

- (CTDCG) 2003 가 2002 30% 가 55

2.9%

○

, 가

□

- 2003

2002

- 2002

가

가

,

가

가

○ 2001 0.7%, 3.6% , 25

○ 銅 가 2002 4.2%, 가 0.9%

- 2003 4 8%, 14.8% 가 ,
2 8

○ 1 5 0.75 * 2002 5.5% 가
銅 가 , 가
* 2003 1

□ 가

- 2002 2.8% 가가 2003

○ 2003 1 0.1%, 2 0.8% 가 3 1997
10 가 1.2%

○ 가가 가 , 4 5 0.1%
0.4% 가 가

- 가 가
가가
가

○ , 가 가 ,
FTA 가 가

□ 가

- 2003 가

○ 2002 가
712 2003 가
3 11 758 .

○ 가가 , 5 700
가 703.58 4 2%
.

○ , 가 OPEC
가 6 9 717 .

□

- 2002 4 가
가 2003 1 3%
.

○ 2002 銅 가 , EU
FTA .

- , 銅 가
가 SARS
.

○ , 가
.

- , 2003 가 가 2002
2.8% .

○ 가 가 2 4%
가 , 가

가 .

-

○ , 가 . 가

.

□

-

가 , 가 2002 6 , 2003 1 가 .

○6 1 9 2.75% .

-

13.6% 3.6% , 19% 9% , 1 2003 5 9 .

○

가 , .

□

- 6 ,

.

-

-1.4% , -1.0% 1999 GDP 가 . 가

○ 2000 GDP 0.1% 2001 2002 -0.3%
-0.8%

○ 가 2000 11%, 2001 3.8%, 2002 0.9%
, 가 3.7%, 5.7%, 3.3%

- 가 "Plan AUGE" "Programa Chile Solidario"
, (, ,) , 가가

○ 가 2004 05 0.5% 가가
18% 19% . 同 1 가
, 3 .

- , 가
(FTA) 가

□ FTA

- 6 6 11 2002 12 12
FTA .

- FTA

FTA , 가 가 FTA
, 2005
FTAA() 가 ,

- FTA
, 2003 4 , 2003

- FTA

·
- FTA UN 가 UN 가

○ FTA ,
' ' , FTA가
·

- FTA
가 가 .

○ 가 ' ' ' ' , 가
, ' , ' , 가
·

□ - (EFTA) FTA

- , , EFTA 3
23 FTA .

○ 2000 12 2003 ,
EFTA 90%가 .

- .
○ EFTA
6 .

- 同 FTA , , ,
, , (fish flour),
·

○

가

.

MERCOSUR

- 가 FTA
MERCOSUR-

.

- MERCOSUR 同 ,
가 .

- FTA

- 5 28 30 15 (ACE)
FTA 가 .

- (DIRECON) ,
가 .

○ ,

.

○ 가 ,

.

FTA

2. .

가.

2002

2001

- 對 2002 FTA 20.7% 4 5,400

○ 2002 2001 1 ,

- 同 8.3% 가 7 5,393 , 8 2001

- 3 , 2001

- 2003 , 4
18.6% 가 1 6,952 , 同 34.8% 가 3 4,814

- (5.6%) 가 (10.4%), , (58.0%), 가
(- 28.8%) , (- 41.4%) (- 23.2%)

○ (56.1%), (25.5%) 가 (16.3%), (70.0%),
(- 77.4%), 가 (- 32.9%), (- 37.3%) , 2002

□ 對 , 2000 가 2003
3 1 50 가 .

- 2003 3 對 () 21 2,546 ,
23 5,676 .

- 對 () , 1 (3,120) ,
6 (1,327) , 11 (923) , 4 (295) ,
1 (10) .

- 2003 FTA가
가 가 .

對韓 .

- FTA

- 2 15 FTA가
.

- () () ,
가 .

○ 가 6 , 9 .

- 2 가 가
, 6 11 .

- 가 - FTA 가 , ,
가 가 .

○ ,

FTA

.

○ , - FTA가

, 가
가 2002 1 4 2 2003

5

.